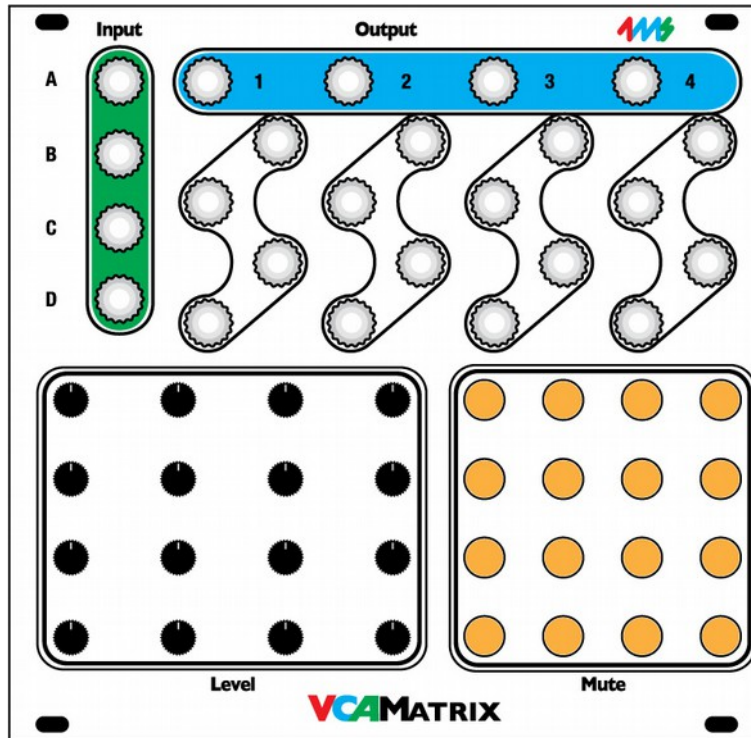


4ms VCA Matrix

Eurorack Module User Manual v2.0



The VCA Matrix from 4ms is a playable 4x4 matrix of 16 VCAs. The four audio/CV inputs can be routed and mixed in any combination to the four outputs, with independent CV control of each VCA.

Features

- 4 CV/audio inputs and 4 outputs (buffered and dc-coupled)
- Full range (0Hz - 20kHz) for both Control and Signal inputs, allows for AM effects, etc.
- 16 VCA's using high quality SSM chips
- Attenuation/gain range from -100dB (mute) to 0dB (unity). Up to +20dB boost with trimpot adjustment.
- Playable surface with 16 latching Mute LED buttons, used to mute each VCA individually (Mute button disconnects Control jack and Level knob, and fully attenuates the VCA)
- LED button brightness indicates amount of attenuation and Control CV signal
- 16 Control jacks for VCA level control
- 16 Level knobs attenuate the incoming Control signals. The Level knobs act as manual level controls when nothing is plugged into the Control jack
- Exponential VCA response in low control voltage range, pseudo-log response in higher voltage range.
- "Soft Limit" effect limits gain to prevent clipping, while still responding to higher Control voltages with more "punch" and wider pulses
- Matrix Expandability: VCA Matrices can be connected to form a larger matrix using headers on the back (4x8, 8x8, 12x4, etc)
- Control Expandability: 16-pin header on back side of PCB allows an external device to control all VCAs: e.g. patch recall, patch sequencing, preset patterns such as quadrature panning, etc.
- Suitable as a 4x4 mixer, splitter, dynamic signal router, limited waveshaper, etc.

Dimensions

- 26 HP Eurorack format module
- 0.99" (25mm) deep

How to Use the VCA Matrix: Examples

Basic usage: Simple 4x4 Mixer

Simply by running up to four inputs into the Signal Inputs and running the four outputs to different destinations, you can use the Level pots and Mute buttons to route the inputs in any amount/combination to the outputs. Although seemingly trivial, this is often a good way to start using the VCA Matrix while creating a patch. As your patch evolves, you will start plugging into the Control jacks, mult'ing/stacking inputs and outputs, creating feedback loops, and generally using the VCA Matrix to weave your signals into a patch.

Basic usage: Keeping your modulations related to each other

Let's say you're making a patch and you want to modulate four different parameters using four different modulation sources. You want all the modulations to be related to each other but not identical. Simply by using the VCA Matrix as a 4-in, 4-output mixer, you can quickly have synchronicity between your four modulation destinations.

Now take it a step farther by running other modulations (e.g. touch pads, LFOs, etc) into the Control jacks to control each modulation mix amount. For instance, run the four pressure outputs of of a Pressure Points into four Control jacks and you have a touch surface mixer. Or use the PP to trigger four envelopes... etc.

Feedback Mixer

Taking the last example one step further, you can take one of the outputs (mult'ing or stacked if necessary) and plug that back to one or more of the Control inputs on the VCA Matrix. Continue routing outputs back into Control inputs, perhaps running them through other modules first. Feedback loops can quickly spiral exponentially into chaos or flat-lined CV, so using the Mute buttons and carefully setting the Level pots is essential.

Amplitude Modulation (AM)

Since the VCA Matrix operates in the full audio range for both the Control and Signal inputs, you can easily achieve Amplitude Modulation ("cross modulation") effects by running an audio frequency into the Signal input and another audio signal into a Control input. For example, run VCO #1 into Input A. Now run a VCO #2 into Control input A-1. On output 1 you'll hear a rich sound based on both input frequencies. Adjust the VCOs and play with the A-1 Level pot to hear the range of textures possible.

Tip: Run the Control VCO #2 through an unused channel on the VCA Matrix (e.g. Input B), and run an envelope with a sharp attack into the associated control jack (e.g. Control input B-2). Patch the output (e.g. Output 2) into the original Control Input (e.g. A-1). Now the AM effect will be modulated in a percussive way.... and.... you can play with various associations such as bringing some of the Control VCO into Output 1 (using B-1). Keep extending this patch in the same way to have another VCO#3 modulate VCO#2, with a different envelope... etc.

Voltage Controlled Signal router (Quadrature)

In quadrature panning, one or more input signals is routed to four outputs (which could be four speakers), usually using 4 LFO CVs that are each 90 degrees out of phase.

For example, a 4ms Pingable Envelope Generator (or various other modules) can be used to generate two LFOs that are 90 degrees out of phase with each other. Take these two signals (0 and 90 degrees) and split each one into two signals. Run one of the 0 degree signals into A-1 and run one of the 90 degree signals into A-2. Take the other 0 and 90 degree signals and invert them with a SISM or other CV signal processor. Then run the inverted 0 degree signal (which is now 180 degrees) into A-3, and run the inverted 90 degree signal (which is now 270 degrees) into A-4. Make sure the inverted signals are shifted into the positive voltage range (if you use the SISM to invert, then turn Scale all the way counter-clockwise, and Shift all the way clockwise). With the Level pots on Row A turned up, you should see the lights swell in a quadrature fashion.

Examples (continued)

Hybrid Patch: 1V/Oct VCO controller and Cross Modulator

This patch requires three VCOs with 1V/oct inputs and one CV source (e.g. from a sequencer, a keyboard, or perhaps random stepped voltages). Part of the VCA Matrix is used for 1V/oct routing and part is used for audio mixing. The rest of the matrix allows for feedback-loops/cross modulation. The patch may seem complicated to grasp at first, so we'll build it step-by-step:

Start by Muting everything. Patch the three VCO outputs into the VCA Matrix Inputs B, C, and D. Run output 4 to your output mixer. Unmute B-4, C-4, and D-4 and you can now mix the three VCO audio outputs by using the Level pots B-4, C-4, and D-4. Tune your VCOs if you want.

Patch the CV source into Input A. Run Outputs 1, 2, and 3 into the 1V/oct inputs of the three VCOs. Unmute A-1, A-2, and A-3 and fine-tune the pitches with the Level pots A-1, A-2, and A-3 so that the oscillators sound good together. See section on Precision Tuning for more information.

Here's where it gets interesting... By unmuting one of the 9 buttons on rows B, C or D and columns 1, 2, or 3, you will be feeding one of the VCO outputs back into the 1V/oct of another VCO. The result is a web of VCOs cross modulating each other. The Level pot fine-tunes the effect. Play the Mute buttons, and try running envelopes into the Control jacks to add motion to the timbres.

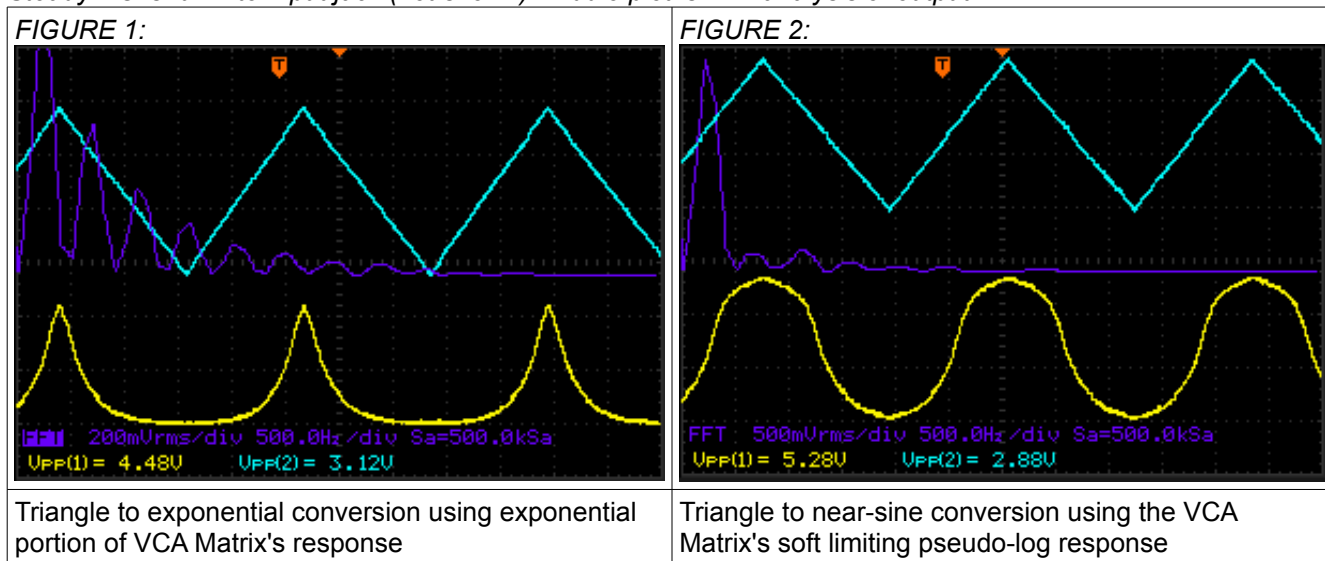
Another variation is to use two CV sources into Inputs A and B, and only two VCOs into Inputs C and D. You can use the Mute buttons and Level knobs to play between the two CV sources and independently setting the level sent to each VCO.

Waveshaper

Most exponential VCA's can convert a linear control voltage into an exponential signal. This patch simply involves running a linear waveshape (e.g. a triangle wave) into a Control jack on the VCA Matrix, and running a *constant DC voltage* into the Signal jack. The constant DC voltage controls the amplitude of the output. To start, keep the amplitude of the triangle wave attenuated (around 3V) and use a uni-polar (positive only) triangle wave. See Figure 1.

The VCA Matrix can also use its pseudo-log response at the upper range of Control voltages to convert a linear waveshape into a sine wave approximation. Use the same patch as above, but bring the DC-offset of the triangle wave up so that it starts to soft-limit the VCA Matrix. Adjust the amplitude of the triangle wave as well (you can use the VCA Matrix's Level pot). See Figure 2.

*Control jack signal is top wave (triangle). Output jack is bottom wave.
Steady DC is run into Input jack (not shown). Middle plot is FFT analysis of output.*



Decibel Range

The VCA Matrix can attenuate a maximum of -100dB, when using the Mute button or applying a negative CV. The maximum gain is factory-set to just over 0dB (unity). Clipping will not occur except in signals with very little headroom. If you desire clipping, a simple solution is to boost the signal after the VCA Matrix, or adjust the trim pots (see Trim Pot section). By applying 0V to the Control jack, or by turning the Control knob all the way down, about -54dB of attenuation results (the LED will be dim, but not off). This is adequate to kill a signal in many situations, but to achieve maximum attenuation, the Mute button should be pressed off (the LED will go completely off). Another way to get maximum attenuation is to apply a CV less than -2.75V.

Applied Voltage on Control Jack (assuming Level pot is all the way up)	Resulting Gain in dB	Resulting Voltage Gain
Muted with button, or <2.75V	-100dB	1 / 100,000 (0.00001)
-1V	-74dB	1 / 5000 (0.0002)
0V (pot all the way down)	-54dB	1 / 500 (0.002)
1V	-34dB	1 / 50 (0.02)
4.4V	0dB (unity)	1.00 (unity)
5.0V	About +1dB	1.12

Soft Limit effect

You can think of Soft Limiting as an effect that provides more “punch” when you turn the VCA Matrix up to “11”, without clipping the signal. The Soft Limit effect is due to a “knee” in the CV/gain curve at around 4V of Control voltage. When there's less than about 4V of CV applied (after being attenuated by the Level pot), the voltage gain of the VCA is related exponentially to the control voltage. When more than about 4V of Control voltage is applied (after the Level pot), the gain starts to increase less rapidly. Knowing how to use the Level pot to attenuate incoming CV is important to getting the most from your VCA Matrix.

There are many VCA modules that allow the gain to increase untethered as the control signal increases, which is useful but can result in unwanted clipping and sometimes increased bleed-through and cross-talk. There are also many VCAs that hard-limit the gain at unity, thus preventing these problems, but at the expense of being less responsive when overdriven by the control signal.

The VCA Matrix takes a third approach, by creating a soft limit for the gain. The gain is limited so that it won't clip and has very little bleed-through/cross-talk. As the control signal increases past the knee, the gain continues to increase *by smaller and smaller amounts, in a logarithmic curve*. What this sounds like to your ears is that as you turn the CV up past the soft limit, the output pulses get longer and longer and a little more “punchy” (assuming you are running an LFO or envelope into the Control jack)

FIGURE 3:

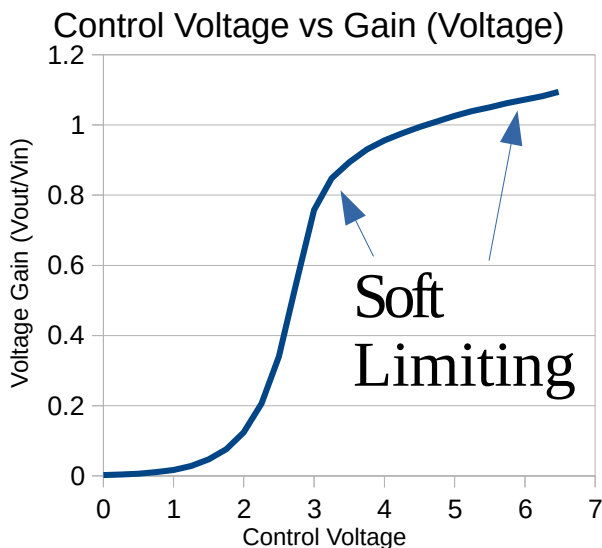
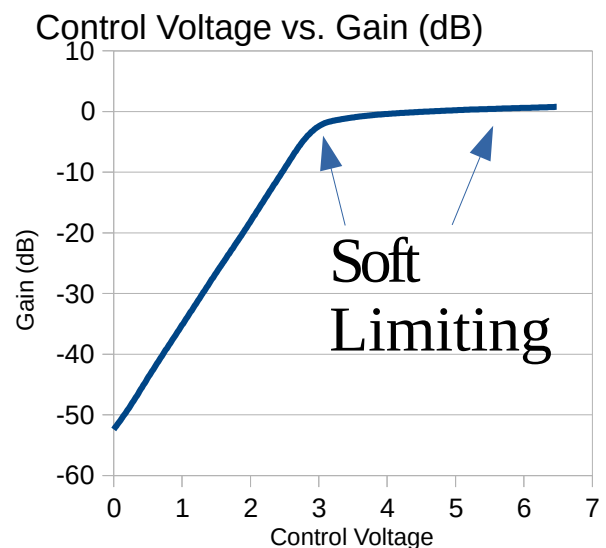


FIGURE 4:



Soft Limit Effect (con't)

In the following figures, the Input signal is a 7.6V amplitude sine wave. The Control signal is a triangle wave (top waveform). The Output is shown in the bottom waveform. The four scope shots show what happens as the amplitude of the control signal is increased from 3V to 7V.

Notice how output signal gets louder from the first image to the second image as the amplitude of control voltage is increased from 3V to 4.5V. Then as the control voltage is increased past 4.5V, output only gets a small amount louder, but the width of the output pulses get longer (less quiet space between pulses). The rounded shape of the output envelope creates a perceived "punchiness" to the output pulses.

FIGURE 5: Applying 3V amplitude control signal.

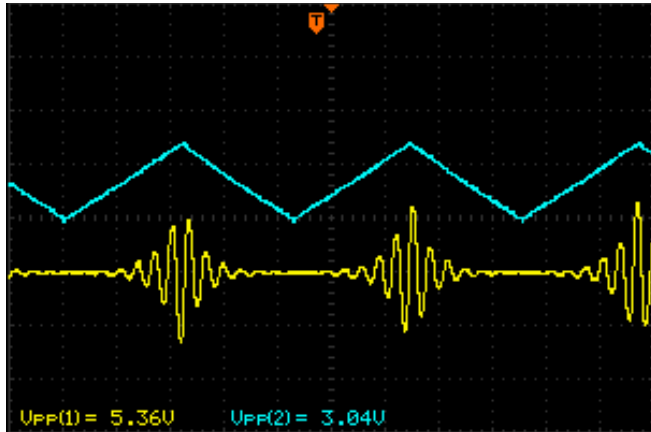


FIGURE 6: Applying 4V amplitude control signal

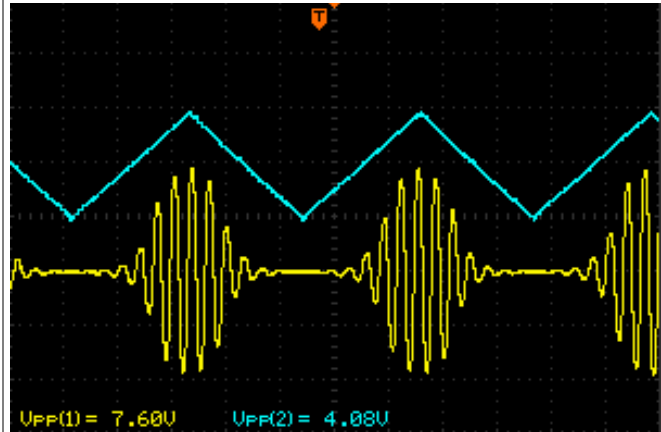


FIGURE 7: Applying 5V amplitude control signal

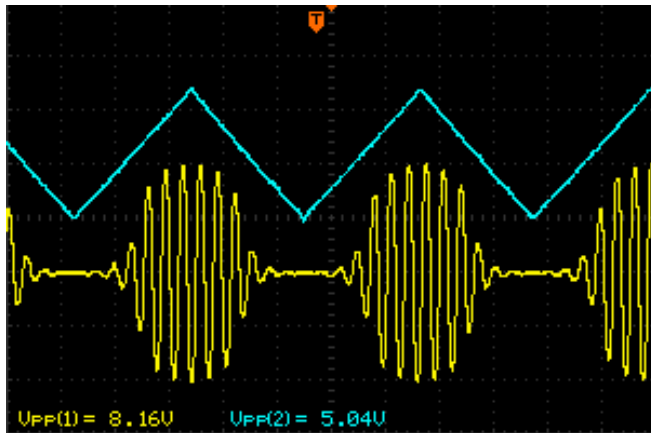
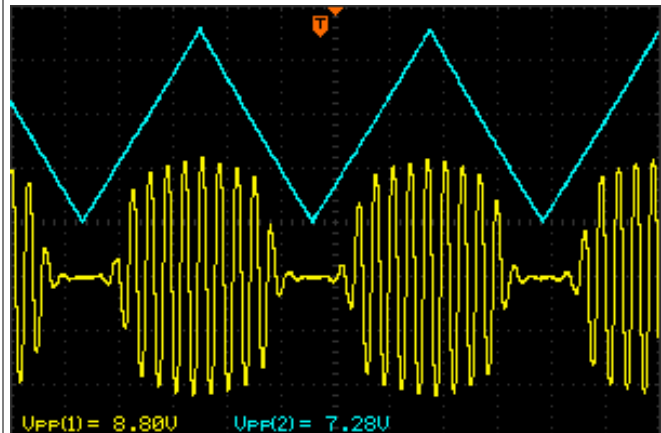


FIGURE 8: Applying 7V amplitude control signal



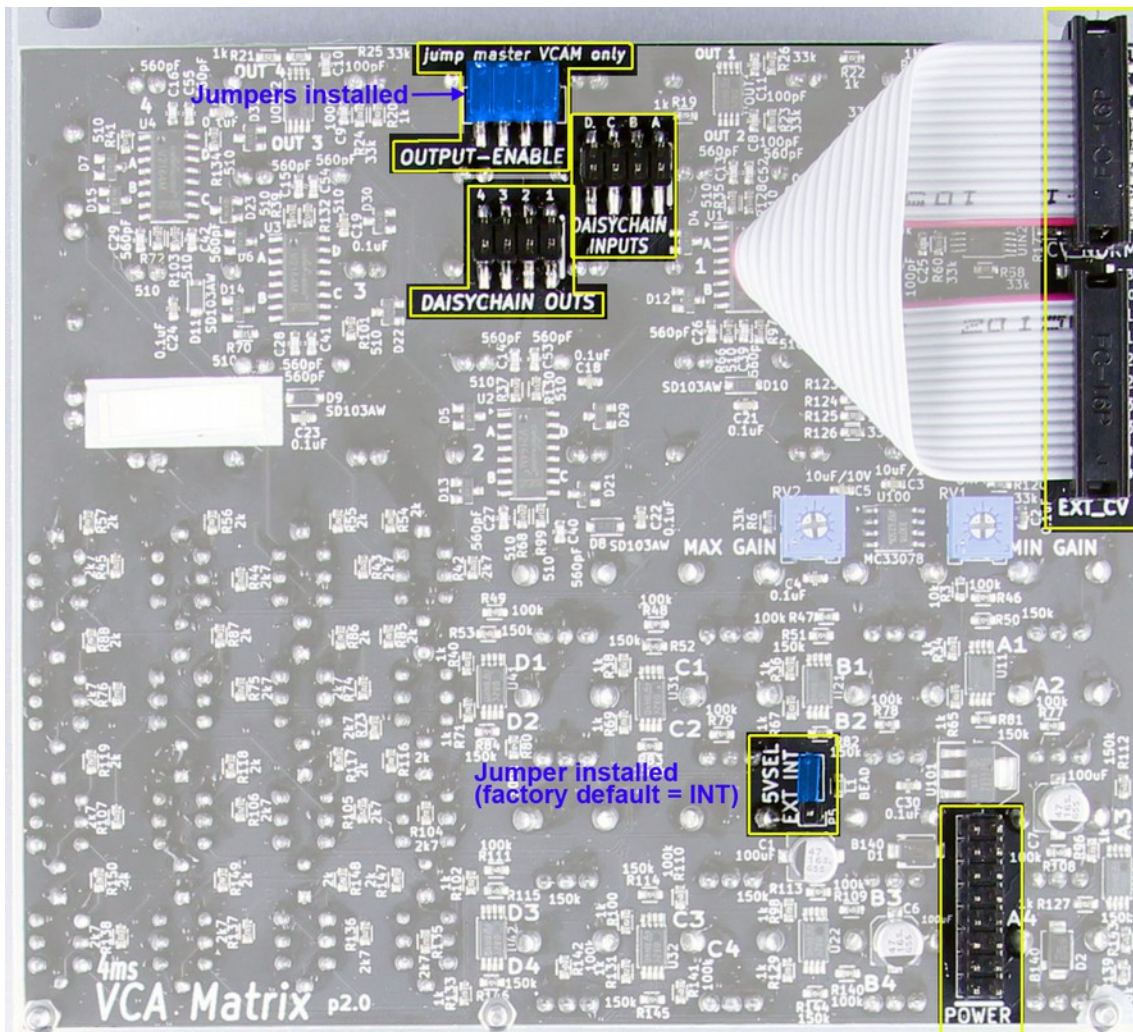
5V amplitude control signal results in longer pulses with only slightly more gain (7.60V vs 8.16V)

7V amplitude control signal results in slightly more gain, and very long pulses. The envelope of the output pulse is rounded, which sounds fuller and more "punchy"

As discussed in the Trim Pot section, the Max Gain trim pot can change the voltage at which the VCA Matrix begins the logarithmic curve, thus changing not only the maximum gain, but also the applied voltage necessary to create the Soft Limit effect.

Besides creating the Soft Limit effect, the logarithmic end of the CV/gain curve also is useful in several other ways. As discussed in other parts of the manual, this log response allows for precision voltage tuning (where small amounts of boost/cut are necessary), and for waveshaping capabilities (e.g. triangle to sine).

Jumpers and settings



Power

Apply standard eurorack format power (16-pin) to this header. The red stripe should be on the bottom, matching the white line and the word "POWER" on the VCA Matrix circuit board.

5V Source Select

If your powersupply/case **does not** supply 5V, put the blue jumper across two pins marked INT. This will use the +12V rail and the VCA Matrix's internal 5V regulator.

If your powersupply/case **does** supply 5V, put the blue jumper across the two pins marked EXT. This will use the +5V rail from your case for the VCA Matrix's 5V needs. The +12V rail will still be used where 12V is needed.

Daisychain Inputs

This header is used for creating a matrix of VCA Matrices. An 8-pin cable is required and can be obtained from 4ms (contact us from our website 4mspedals.com). Connecting two VCA Matrices with this header is the same as stacking/multing the input jacks. This creates a 4-input, 8-output matrix. The inputs on either module can be used, and they will be routed to either/both modules' output jacks. Further expansion is possible beyond 4x8 by using another special cable (8-pin, 3 connectors).

Daisychain Outputs

This header is used for creating a matrix of VCA Matrices. Connecting two VCA Matrices with this header will create an 8-input, 4-output matrix. This is **not** the same as stacking/multing the output jacks. Only one VCA Matrix in the chain can have the Output Enable jumpers in place (master). The Output Enable jumpers on the other VCA Matrix should be removed, so that the output jacks on the slave unit are disabled. Further expansion beyond 8x4 is possible using a special cable (8-pin, 3 connectors).

CV Expansion

This header allows for connection to an external device that sends CV information to control the 16 VCAs. The VCA Matrix has a factory-installed ribbon cable connected to the header. Keep the ribbon cable in place unless you are following instructions from an external device designed to control the VCA Matrix.

The switch pin on each Control jack is connected to a pin on this header. The ribbon cable normalizes the control jacks to 4.5V. Replacing this constant 4.5V with a variable CV generated by an external module is the basis of remote-controlled patch storage and recall. External control can always be overridden by patching something into the Control jack, or by muting the channel. The external CV can also be attenuated with the Level pot. So even if there is an external brain module controlling the VCA Matrix, you still have full control.

Trim pots

There are two trim pots on the VCA Matrix: “Max Gain” and “Offset”. These are factory calibrated, and are not meant to be adjusted unless you have a specific reason to. Always measure and record the voltage on the wiper (center) pin of the trim pot before turning it. Their effect on the circuit interrelates, so usually both must be adjusted whenever one is adjusted. Approximately +/-5mV of precision is required when setting the trim pots.

Max Gain trim pot: This sets the Soft Limit (see section above). Factory setting is around 500mV, before final calibration. The voltage provides a biasing for Schottky diodes acting at their threshold of reverse/forward biasing when the incoming CV approaches the soft limit. Changing this trim pot will change the maximum amount of gain, that is, the point at which the soft limit effect begins to take place. Lower voltages result in more gain. If set to zero, clipping is possible with extremely hot signals.

Offset trim pot: This effectively sets the amount of attenuation when the pot is turned down or 0V is applied to the Control jack. This trim pot also alters the response of the soft limit effect, so it's recommended to adjust it before adjusting the Max Gain trim pot. As you turn this trim pot, the brightness of the LEDs will change when the pot is turned down. The factory setting is roughly 1.75V, which makes the LEDs dim (but not off) when the pot is turned all the way down. This provides about -55dB of attenuation. By adjusting this trim pot, you could have a different amount of attenuation with the pot turned down, and the LED will likewise change in brightness.

Precision tuning (1V/oct, etc)

Due to the logarithmic curve at Control voltages greater than 4V, the pots on the VCA Matrix exhibit high precision at their upper end (approximately from 4 o'clock to full-up). This is useful if you are running 1V/oct into the VCA Matrix and then into tuned oscillators because you can precisely tune or de-tune them by adjusting the pot within this upper range. For example you could run a 1V/oct signal into Input A, and then run Outputs 1 and 2 into two tuned VCOs. By turning both pots up (A-1 and A-2), and then bringing one of the pots slightly down, you have excellent control over a classic fat detuned VCO sound.

Power consumption

+12V rail:

88mA max with 5V Source jumper selecting external 5V

135mA max with 5V Source jumper selecting internal 5V

+5V rail:

47mA max with 5V Source jumper selecting external 5V

not used with 5V Source jumper selecting internal 5V

-12V rail:

135mA max

4MS VCA MATRIX

Quick Start Guide

SIGNAL INPUTS (4)

Patch in four audio and/or CV signals that you want to mix, attenuate, and/or route.

Examples:

- Four VCOs/voices
- Four clock signals
- Four LFO/envelopes
- Any combination of any type of signal that you want to mix in different proportions (dynamically or manually) into four other things

LEVEL POTS (16)

Each pot controls the attenuation of the corresponding VCA, or attenuates the incoming Control CV.

If nothing is plugged into the corresponding Control jack, then the Level pot acts as a level control. The LED will change in brightness as you turn the pot.

When something is plugged into the Control jack, the Level pot acts as an attenuator for that control signal.

Note: When the Level pot is all the way down, about -55dB of attenuation is provided. The LED will be dim, but not off (this is useful for determining if a channel is Muted or just turned down).

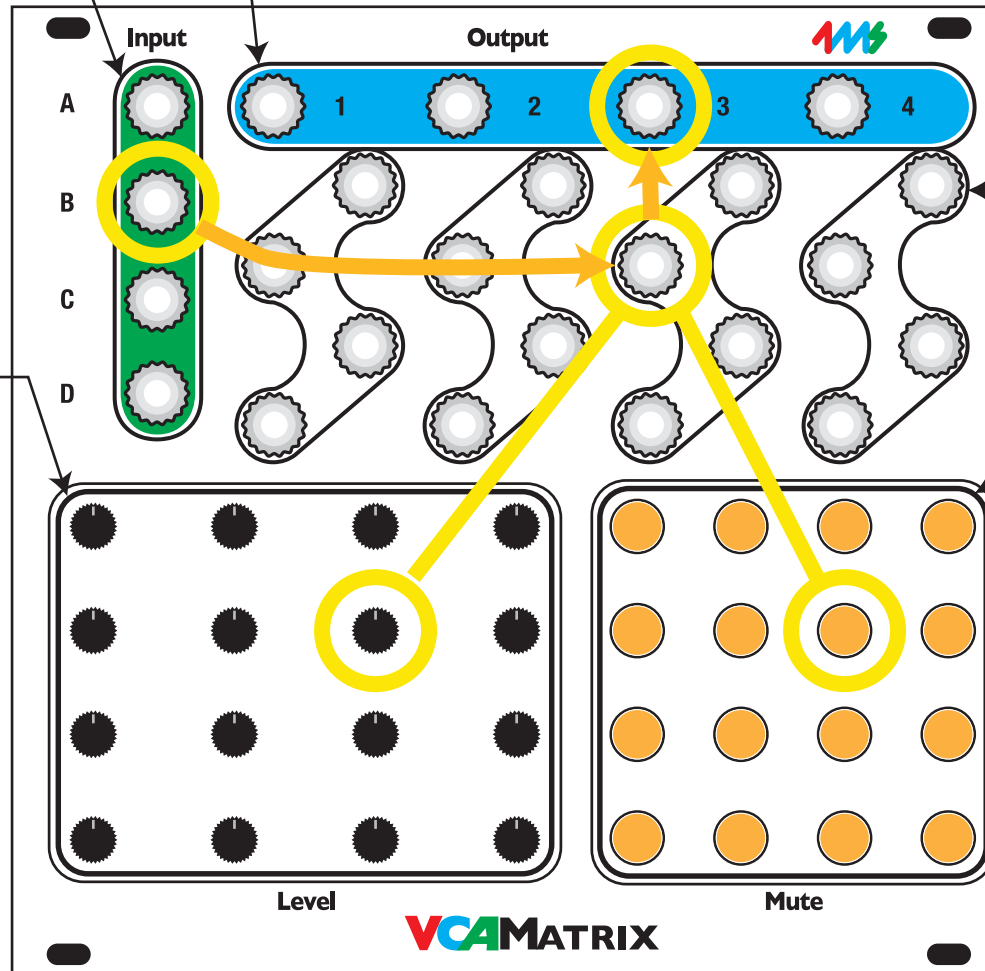
Muting the channel will turn the LED completely off and provide about -100dB of attenuation.

SIGNAL OUTPUTS (4)

Each of these outputs is a mix of the four inputs.



For example, the amount of Input B's signal that appears on Output 3 is set by the yellow circled Control jack, Level pot, and Mute button (row B, col 3).



CONTROL JACKS (16)

Each jack allows CV control of the corresponding VCA.

The signal on the jack is attenuated by its Level pot.

Applying 0V on the Control jack yields approx -55dB of attenuation. (Less than 0V can yield up to -100dB of attenuation)

Applying 5V on the Control jack yields a slight amount of gain (less than +1dB typically-- see the section on 1V/oct tuning for the usefulness). Unity gain is at 4.6V. More than 5V can produce up to +10dB gain, see the section on "Soft Limiting".

MUTE BUTTONS with LED INDICATORS (16)

Each button in the matrix mutes the corresponding VCA.

Muting overrides any Control input or Level pot setting.

The LED brightness indicates the gain of the VCA.

For example, pressing the yellow circled button will mute Input B from Output 3 (-100dB of attenuation). The LED will go off. Pressing the button again will allow the Level pot and Control jack to determine the amount of Input B that appears on Output 3.